

## TLSH Sanitary multicandle housing



- Sanitary standard.
- Monolithically made, sterile parts, without welds.
- Surface finish in sterile part to  $Ra < 0,4\mu m$
- External mirror polished.
- Minimum flow resistance.
- Stainless steel 316L construction.
- Broad range of connections and cartridge types.
- Wide range of types of connections and cartridges.
- On-line integrity testing available.

TLSH sanitary housing was designed for sterile filtration and meets even the most demanding pharmaceutical and biotechnological process requirements. It provides the highest microbiological safety by using gas and liquid sterilizing filtration.

Housing is well-adjusted to multiple cartridges in pharmaceutical standard (international code 226) available in four lengths: 10, 20, 30 and 40 inches.

"In-line" housing construction facilitates easy disassembly and sterilization in autoclave.

This filter is recommended especially in case of vertical pipe sections, limited space and sterile air (nitrogen, carbon dioxide) inlet to storage or buffer tanks.

Housing can be accoutered in air and drainage ports and connections which enable on-line filter integrity measurements.

### Filters with heating jacket

Heating jacket installation (on inlet and on filter housing) is recommended in many cases, for example when liquid in tank has high temperature (water for injection) or for external systems.

There are two options available:

- electrical - supplied with alternating current;
- steam - steam source required, pressure can not exceed 0,5 barg.

# TLSH Sanitary multicandle housing

**Maximum allowable working pressure**  
10 bar

**Maximum allowable working temperature**  
142°C

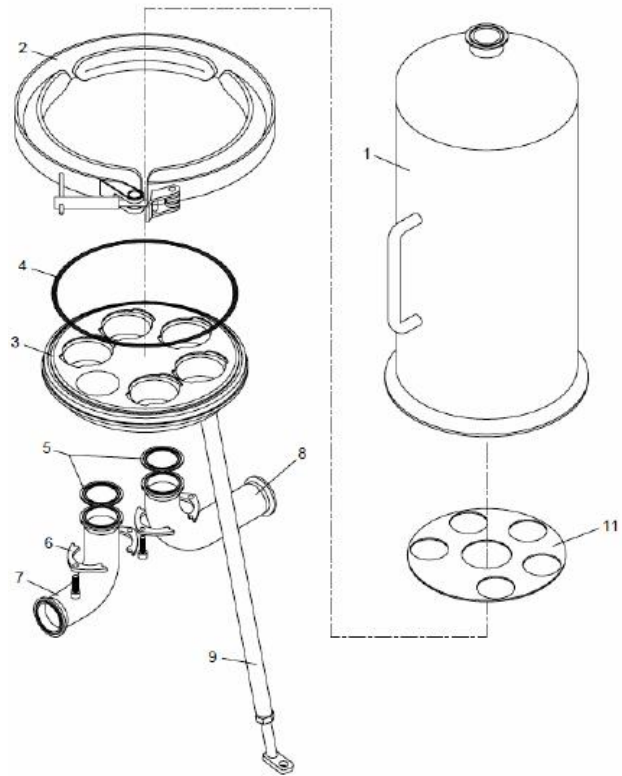
**Structural materials**

- 316L stainless steel
- O-ring: Silicone, Viton or EPDM

**Surface finish**

- internal: sterile part to 0,4um Ra.
- external : mirror polished to 0,8um Ra.

**Housing for 5 cartridges**



**Ordering information**

Number of candles	Type	Cartridge length [inch]	Cartridge code	Surface finish	Sealing	Port size	Connection options
3	TLSH	1= 10	2 = code 222	P = Polished	S = Silikon	32=DN32	TC = Tri-Clamp
5		2 = 20	6 = code 226	EP = Elektropolished	V = Viton	40=DN40	FT = Welded
8		3 = 30			E = EPDM	50=DN50	FL = Flange
12		4 = 40			B = NBR	65=DN65	BSP = Thread
18						80=DN80	
24						90=DN90	
30						100=DN100	
						125=DN125	
						150=DN150	