

# Pressure Switches

A comprehensive range of Pressure Switches, providing a range of different options for converting pressure changes into an electrical signal. The range includes electromechanical and electronic switches suitable for pneumatic and all fluid applications.

*Off line programming*



*Strong, versatile*










*Light, compact, easy to use*



# Fast Find Guide

**Please note:** These products represent only part of the IMI Precision Engineering pressure switch range. If you can't see the option you require please contact us.

## ● Electro-Mechanical Pressure Switches

<p><b>18D Pneumatic</b> -1 ... 30 bar</p>  <p><b>EXPRESS</b> Page 407</p>	<p><b>18D Hydraulic</b> 5 ... 420 bar</p>  <p>Page 408</p>	<p><b>20D</b> Low pressure, Allfluid and ATEX 0,5 ... 16 bar</p>  <p>Page 409</p>	<p><b>8D</b> <b>Pneumatic and Hydraulic</b> 0,2 ... 30 bar 5 ... 250 bar</p>  <p>Page 410</p>	<p><b>M/1339</b> <b>Pneumatic</b> 0 ... 10 bar</p>  <p>Page 411</p>	<p><b>04015600</b> <b>Pneumatic</b> 0 ... 10 bar</p>  <p>Page 412</p>
<p><b>99D - Mini pressure switch</b> <b>Electro-mechanical</b> 0 ... 10 bar</p>  <p>Page 413</p>					

## ● Electronic Pressure Switches

<p><b>33D Pneumatic/Allfluid</b> -1 ... 400 bar</p>  <p>Page 414</p>	<p><b>40D Pneumatic</b> -1 ... 25 bar</p>  <p>Page 415</p>	<p><b>51D Pneumatic</b> -1 ... 10 bar</p>  <p><b>EXPRESS</b> Page 416</p>
--	--	---

## ● Pressure Sensors

<p><b>18S Pneumatic</b> -1 ... 25 bar</p>  <p>Page 417</p>
---

# ELECTRO-MECHANICAL PRESSURE SWITCH

18D Pneumatic -1 ... 30 bar

- Gold-plated contacts
- High cycle life
- Vibration resistant to 15 g
- Microswitch approved by UL and CSA
- Intrinsically safe operation

## Technical Data

**Medium:**  
For filtered, lubricated or non lubricated compressed air, neutral and incombustible gases

**Operation:**  
Diaphragm

**Ambient temperature:**  
-10°C ... +85°C  
except for ATEX versions  
Air supply must be dry enough to avoid ice formation at temperatures below +2°C

**Repeatability:**  
±4%, of full scale

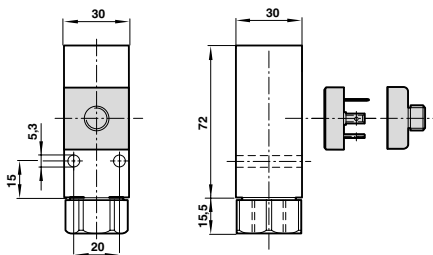
## Materials

Housing: Aluminium (brass)  
Seals: NBR/FPM

**EXPRESS**



## Dimensions



## Options

- Other M12 configurations available
- Other flange options available
- NPT connection thread
- Low temperature versions

## Models

## Accessories

Standard Model	Pressure range (bar)	Fluid connection	Electrical connection	Switching pressure difference (bar)	Max. over pressure (bar)	Plug	Electrical connector M12 x 1 Straight x 2 m long    90° x 2 m long	
	-1 ... 0	G1/4	DIN EN 175301-803 Form A	0,15 ... 0,18	80	-	-	-
	-1 ... 1	G1/4	DIN EN 175301-803 Form A	0,25 ... 0,35	80	-	-	-
	0,2 ... 2	G1/4	DIN EN 175301-803 Form A	0,20 ... 0,35	80	-	-	-
	0,5 ... 8	G1/4	DIN EN 175301-803 Form A	0,35 ... 0,85	80	-	-	-
	1 ... 16	G1/4	DIN EN 175301-803 Form A	0,40 ... 1,20	80	-	-	-
	1 ... 30	G1/4	DIN EN 175301-803 Form A	1,00 ... 5,00	80	-	-	-
	0,2 ... 4	G1/4	DIN EN 175301-803 Form A	0,20 ... 0,35	80	0570110000000000	-	-
	0,5 ... 8	G1/4	DIN EN 175301-803 Form A	0,35 ... 0,85	80	0570110000000000	-	-
	1 ... 16	G1/4	DIN EN 175301-803 Form A	0,40 ... 1,20	80	0570110000000000	-	-
	-1 ... 0	Flange	DIN EN 175301-803 Form A	0,15 ... 0,18	80	-	-	-
	0,2 ... 2	Flange	DIN EN 175301-803 Form A	0,20 ... 0,35	80	-	-	-
	0,5 ... 8	Flange	DIN EN 175301-803 Form A	0,35 ... 0,85	80	-	-	-
	1 ... 16	Flange	DIN EN 175301-803 Form A	0,40 ... 1,20	80	-	-	-
	-1 ... 0	G1/4	M12 x 1	0,15 ... 0,18	80	-	0523057000000000	0523058000000000
	0,2 ... 2	G1/4	M12 x 1	0,20 ... 0,35	80	-	0523057000000000	0523058000000000
	0,5 ... 8	G1/4	M12 x 1	0,35 ... 0,85	80	-	0523057000000000	0523058000000000
	1 ... 16	G1/4	M12 x 1	0,40 ... 1,20	80	-	0523057000000000	0523058000000000

MODELS FOR WATER APPLICATIONS								
	0,5 ... 8	G1/4	DIN EN 175301-803 Form A	0,35 ... 0,85	80	0570110000000000	-	-

MODELS CONFORMING TO ATEX – ZONE 2 AND 22 (Ex II 3G/D)								
	0,2 ... 2	G1/4	DIN EN 175301-803 Form A	0,20 ... 0,35	80	0570110000000000	-	-
	0,5 ... 8	G1/4	DIN EN 175301-803 Form A	0,35 ... 0,85	80	-	-	-
	1 ... 16	G1/4	DIN EN 175301-803 Form A	0,40 ... 1,20	80	-	-	-

\* Switch is LABS free, plug needs to be ordered separately, all other DIN connector versions include standard connector plug.

# ELECTRO-MECHANICAL PRESSURE SWITCH

18D Hydraulic 5 ... 420 bar

- Microswitch with gold plated contacts
- High number of switching cycles
- Vibration resistant to 15 g
- Microswitch approved by UL and CSA
- Intrinsically safe operation

## Technical Data

**Medium:**  
For neutral, self lubricating fluids, e.g. hydraulic oil, lube oil, light fuel oil

**Operation:**  
Piston type sensor system

**Ambient/Media temperature:**  
-25°C ... +80°C  
Air supply must be dry enough to avoid ice formation at temperatures below +2°C

**Media viscosity:**  
Up to 1000 mm<sup>2</sup>/s

**Repeatability:**  
±4%, of full scale

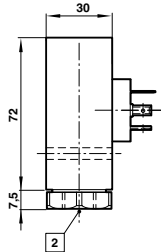
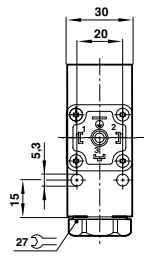
## Materials

Body: Aluminium/steel  
Seals: PTFE, NBR

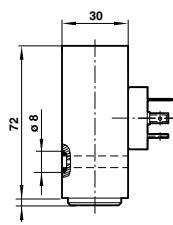
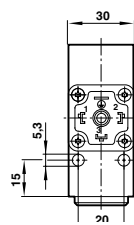


## Dimensions



G1/4



Flange




## Models

Standard Model	Pressure range (bar)	Fluid connection	Electrical connection	Switching pressure difference (bar)	Max. over pressure (bar)
	5 ... 70	G1/4	DIN EN 175301-803 Form A	10,5 ... 15	400
	10 ... 160	G1/4	DIN EN 175301-803 Form A	11 ... 17	400
	25 ... 250	G1/4	DIN EN 175301-803 Form A	11 ... 17	400
	40 ... 420	G1/4	DIN EN 175301-803 Form A	17 ... 38	600
	5 ... 70	Flange	DIN EN 175301-803 Form A	10,5 ... 15	400
	10 ... 160	Flange	DIN EN 175301-803 Form A	11 ... 17	400
	25 ... 250	Flange	DIN EN 175301-803 Form A	11 ... 17	400
	40 ... 420	Flange	DIN EN 175301-803 Form A	17 ... 38	600

All versions include standard connector plug.

## Accessories

Pressure port reducing nipple	Surge damper	Connector DIN EN 175301-803
		
0574767000000000 (brass)	0574773000000000 (brass)	0570110000000000 (Form A)
0550083000000000 (stainless steel)	0553258000000000 (stainless steel)	

## Options

- M12 connections
- NPT thread options
- ATEX options

# ELECTRO-MECHANICAL PRESSURE SWITCH

20D Allfluid: 0,5 ... 16 bar – ATEX Allfluid: 0,5 ... 10 bar – Low Pressure: 0 ... 0,25 bar

- High accuracy
- Robust metal housing (Standard and Low pressure)
- Robust metal housing in weather-resisting version (ATEX)

## Technical Data

**Medium:**  
For neutral, aggressive (Standard only), non-flammable gases and fluids

**Operating pressure:**  
Allfluid: 0,5 ... 16 bar  
ATEX Allfluid: 0,5 ... 10 bar  
Low Pressure: -0,025 ... 1,6 bar  
(Other ranges available, please contact us)

**Ambient/Media temperature:**  
Standard and Low pressure:  
Ambient: -25°C ... +80°C  
Media: -10°C ... +100°C  
ATEX:  
Ambient: -10°C ... +75°C  
Media: -10°C ... +75°C

## Materials

Housing: Die cast aluminium  
Sensor: Stainless steel

20D Allfluid



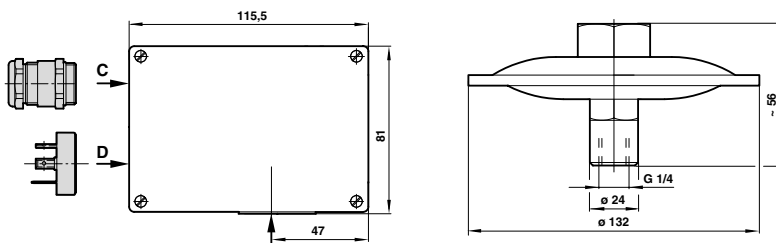
20D ATEX



20D Low pressure



## Dimensions



## Options

- Other pressure ranges
- Other electrical connections

## Models

ALLFLUID Model	Pressure range (bar)	Fluid connection	Electrical connection	Switching pressure difference (bar)	Range – Switching pressure difference (bar)			Max. over pressure (bar)	Plug	Bracket – Steel
					Lower	Upper & min.	Upper max.			
	0,5 ... 6	G1/2	Gland Pg 13,5	Adjustable	0,80	0,90	5,00	20	–	0574772000000000
	0,5 ... 10	G1/2	Gland Pg 13,5	Adjustable	0,90	1,90	8,00	20	–	0574772000000000
	0,5 ... 10	G1/2	M20 x 1,5	Adjustable	0,90	1,90	8,00	20	–	0574772000000000
	1 ... 16	G1/2	M20 x 1,5	Adjustable	1,70	2,00	12,00	50	–	0574772000000000
	0,5 ... 6	G1/2	Gland Pg 13,5	Fixed	0,30	0,35	–	20	–	0574772000000000
	0,5 ... 10	G1/2	Gland Pg 13,5	Fixed	0,30	0,40	–	20	–	0574772000000000
	0,5 ... 10	G1/2	M20 x 1,5	Fixed	0,30	0,40	–	20	–	0574772000000000
	1 ... 16	G1/2	M20 x 1,5	Fixed	0,70	0,80	–	50	–	0574772000000000
<b>ATEX ALLFLUID</b>										
	0,5 ... 10	G1/2	M20 x 1,5	Fixed	0,70	0,90	–	20	–	0574772000000000
	0,5 ... 10	G1/2	M20 x 1,5	Adjustable	0,70	0,90	8,00	20	–	0574772000000000
<b>LOW PRESSURE</b>										
	0 ... 0,025	G1/4	DIN EN 175301-803 Form A	Fixed	0,003	0,004	–	0,5	0570110000000000	0574772000000000
	0 ... 0,06	G1/4	DIN EN 175301-803 Form A	Fixed	0,004	0,006	–	0,5	0570110000000000	0574772000000000
	0,004 ... 0,16	G1/4	DIN EN 175301-803 Form A	Fixed	0,004	0,008	–	0,5	0570110000000000	0574772000000000
	0 ... 0,25	G1/4	DIN EN 175301-803 Form A	Fixed	0,004	0,009	–	0,5	0570110000000000	0574772000000000

Note: Other pressure ranges available. Please contact us.

## Accessories



# ELECTRO-MECHANICAL PRESSURE SWITCH

8D Pneumatic: 0,2 ... 30 bar - Hydraulic: 5 ... 250 bar

- Robust design
- High Accuracy

## Technical Data

### Medium:

Pneumatic: For neutral, gaseous fluids  
Hydraulic: For neutral liquid fluids

### Operation:

Diaphragm

### Repeatability:

±2% of final value  
(depending on regulating pressure)

### Media viscosity:

Up to 1000 mm<sup>2</sup>/s

### Ambient/Media temperature:

Ambient: -10°C ... +80°C

Media: 0°C ... +80°C

Air supply must be dry enough to avoid ice formation at temperatures below +2°C

## Materials

### Body:

Aluminium

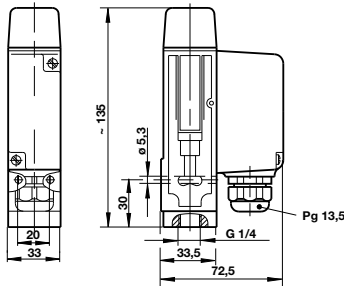
### Seals:

NBR; FPM/PTFE

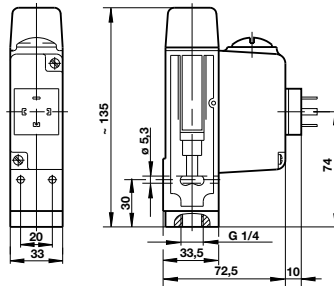


## Dimensions

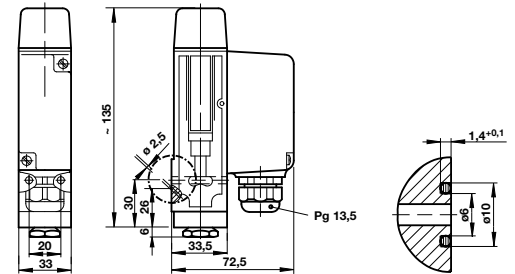
G1/4, cable gland




G1/4, form A




Flange, cable gland



## Models

Pneumatic switches							Plug
Model	Pressure range (bar)	Fluid connection	Electrical connection	Adjustment method	Switching pressure difference (bar)	Max. over pressure (bar)	
	0,2 ... 12	G1/4	Gland pg 13,5	Allen screw – cover	0,9 ... 1,4	50	–
0820155000000000	0,2 ... 12	G1/4	DIN EN 175301-803 Form A	Allen screw – cover	0,9 ... 1,4	50	0570110000000000
0820750000000000	0,5 ... 30	G1/4	Gland pg 13,5	Allen screw – cover	1,0 ... 2,0	50	–
0820850000000000	0,5 ... 30	Flange	Gland pg 13,5	Allen screw – cover	1,0 ... 2,0	50	–

## Accessories

Hydraulic switches							Plug
Model	Pressure range (bar)	Fluid connection	Electrical connection	Adjustment method	Switching pressure difference (bar)	Max. over pressure (bar)	
	5 ... 70	G1/4	Gland pg 13,5	Hex. screw & cover	7 ... 12	250	–
0821055000000000	5 ... 70	G1/4	DIN EN 175301-803 Form A	Hex. screw & cover	7 ... 12	250	0570110000000000
0821050000000000	10 ... 160	G1/4	Gland pg 13,5	Hex. screw & cover	9 ... 18	250	–
0821150000000000	10 ... 160	Flange	Gland pg 13,5	Hex. screw & cover	9 ... 18	250	–
0821097000000000	50 ... 250	G1/4	Gland pg 13,5	Hex. screw & cover	12 ... 16	340	–

# ELECTRO-MECHANICAL PRESSURE SWITCH

M/1339 Pneumatic 0 ... 10 bar

## Pneumatic

- Non adjustable
- N/O or N/C operation

## Technical Data

### Medium:

Compressed air, filtered,  
lubricated and non-lubricated

### Operation:

Pressure switch, non-adjustable

### Mounting:

Holes in switch casing for  
self-tapping screws

### Ambient temperature:

-20°C ... +80°C

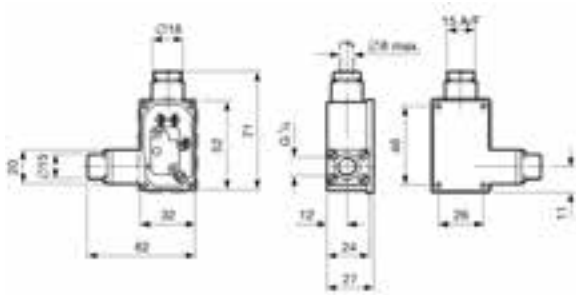
Air supply must be dry enough to avoid ice formation  
at temperatures below +2°C

## Materials


Polyacetal casing, NBR seals.



## ● Dimensions



## ● Models

Model	Pressure range (bar)	Fluid connection	Switching pressure
	0 ... 10	G1/8	2 bar +/- 0,5 bar

# ELECTRO-MECHANICAL PRESSURE SWITCH

04015600 Pneumatic 0 ... 10 bar

## Pneumatic

- Wide adjustment range
- N/O or N/C operation

## Technical Data

### Medium:

Compressed air, filtered, lubricated and non-lubricated

### Operation:

Pressure switch, adjustable

### Mounting:

Holes in switch casing

### Ambient temperature:

-10°C ... +70°C

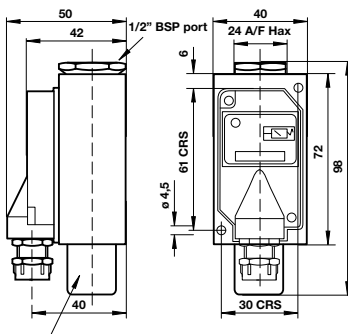
Air supply must be dry enough to avoid ice formation at temperatures below +2°C

## Materials

Diecast zinc alloy casing, NBR seals.




## ● Dimensions



### Adjustment:

Remove cover. Use 3 mm A/F key for adjustment and 13 mm A/F spanner or lockout.

## ● Models

Model	Pressure range (bar)	Fluid connection	Pressure differential (bar)
			
04015600	0 ... 10	G1/8	0,2 ... 0,7



# MINI PRESSURE SWITCH

99D Electro-Mechanical 0 ... 10 bar

- Very small construction
- Screw-in type
- AMP E-terminals 2,8 x 0,8 mm

## Technical Data

**Medium:**  
Lubricated air, oil and other neutral lubricated fluids

**Over pressure:**  
20 bar maximum

**Mounting position:**  
Optional

**Degree of protection:**  
IP00

**Ambient/Media temperature:**  
Ambient: -10°C ... +60°C  
Media: 0°C ... +80°C  
*Air supply must be dry enough to avoid ice formation at temperatures below +2°C*

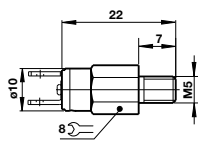
## Materials

Body: Stainless steel  
Seals: NBR/POM

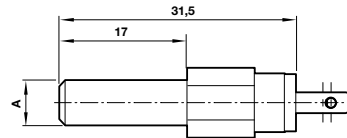


## Dimensions

99505..



VM10..



## Models

Model	Port size	Pressure range (bar)	Contact range	
			P <sub>VU</sub> (bar)	P <sub>VO</sub> (bar)



9950501	M5	0 ... 10	1,5 ... 2,5	2,0 ... 3,5
9950502	M5	0 ... 10	2,5 ... 3,7	3,0 ... 5,0
9950509	M5	0 ... 10	3,5 ... 5,1	4,7 ... 6,2

Model	Port size	Pressure range (bar)	Contact range	
			P <sub>VU</sub> (bar)	P <sub>VO</sub> (bar)



VM106517AQ0804	4 mm	0 ... 10	3,0 ... 5,0 bar	2,5 ... 3,7 bar
VM106517AQ0806	6 mm	0 ... 10	3,0 ... 5,0 bar	2,5 ... 3,7 bar

# ELECTRONIC PRESSURE SWITCH

33D Pneumatic and Allfluid -1 ... 400 bar

- Display of system pressure and unit (pressure unit programmable)
- Compact and robust design
- Easy programming of set points and additional functions
- Transistor output signals 1 x PNP/2 x PNP/1 x PNP + 4 ... 20 mA
- Electronic lock
- Switching status indicated by LED
- Standard M12 x 1 electrical connection (IP 65)
- For pneumatic, allfluid and hydraulic applications

## Technical Data

### Medium:

Filtered compressed air, lubricated or unlubricated, neutral gases, neutral fluids

### Display:

LCD 4 digits illuminated, pressure unit programmable for bar, psi, mpa

### Mounting position:

Optional

### Operating pressure:

-1 ... 16 bar (pneumatic)  
0 ... 400 bar (hydraulic/allfluid)

### Ambient/Media temperature:

Ambient: -10°C ... +60°C

Media: -10°C ... +80°C

Air supply must be dry enough to avoid ice formation at temperatures below +2°C

## Materials

### Pneumatic:

Housing: Aluminium/Stainless steel

Sensor (fluid-affected parts):

Silizium/Aluminium

### Allfluid:

Housing: Aluminium/Stainless steel

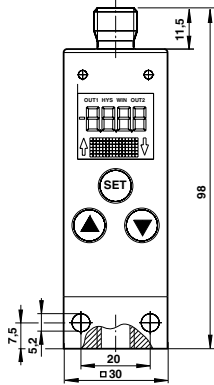
Sensor (fluid-affected parts):

Stainless steel 1.4571 (0 ... 250 bar),

Stainless steel 1.4542 (400 ... 630 bar)



## Dimensions



## Options

- M12 connections
- NPT thread options
- ATEX options




## Electrical parameters

Electrical connection:	M12 x 1
Power supply:	10 ... 32 V d.c. (polarity safe) digital models 15 ... 32 V d.c. (polarity safe) analogue models

## Electrical connection M12 x 1

PIN-	Signal	Cable colour
1	+UB	Brown
2	Out 2 (PNP) / analogue 4 ... 20 mA	White
3	0 V	Blue
4	Out 1 (PNP)	Black
5	PE	Grey

## Models

Model	Pressure range (bar)	Over Pressure (bar)	Fluid connection	Output signal	Electrical connector M12 x 1			
					Straight x 2 m long	Straight x 5 m long	90° x 2 m long	90° x 5 m long
	-1 ... 1	10	G1/4	1 x PNP	0523057000000000	0523052000000000	0523058000000000	0523053000000000
0863022000000000	-1 ... 1	10	G1/4	2 x PNP	0523057000000000	0523052000000000	0523058000000000	0523053000000000
0863042000000000	-1 ... 1	10	G1/4	1 x PNP / analogue 4 ... 20 mA	0523057000000000	0523052000000000	0523058000000000	0523053000000000
0863016000000000	-1 ... 1	10	Flange	1 x PNP	0523057000000000	0523052000000000	0523058000000000	0523053000000000
0863112000000000	0 ... 10	40	G1/4	1 x PNP	0523057000000000	0523052000000000	0523058000000000	0523053000000000
0863122000000000	0 ... 10	40	G1/4	2 x PNP	0523057000000000	0523052000000000	0523058000000000	0523053000000000
0863212000000000	0 ... 16	30	G1/4	1 x PNP	0523057000000000	0523052000000000	0523058000000000	0523053000000000
0863222000000000	0 ... 16	30	G1/4	2 x PNP	0523057000000000	0523052000000000	0523058000000000	0523053000000000
0863242000000000	0 ... 16	30	G1/4	1 x PNP / analogue 4 ... 20 mA	0523057000000000	0523052000000000	0523058000000000	0523053000000000
0863216000000000	0 ... 16	30	Flange	1 x PNP	0523057000000000	0523052000000000	0523058000000000	0523053000000000
0863312000000000	0 ... 40	100	G1/4	1 x PNP	0523057000000000	0523052000000000	0523058000000000	0523053000000000
0863322000000000	0 ... 40	100	G1/4	2 x PNP	0523057000000000	0523052000000000	0523058000000000	0523053000000000
0863342000000000	0 ... 40	100	G1/4	1 x PNP / analogue 4 ... 20 mA	0523057000000000	0523052000000000	0523058000000000	0523053000000000
0863412000000000	0 ... 100	200	G1/4	1 x PNP	0523057000000000	0523052000000000	0523058000000000	0523053000000000
0863422000000000	0 ... 100	200	G1/4	2 x PNP	0523057000000000	0523052000000000	0523058000000000	0523053000000000
0863512000000000	0 ... 160	300	G1/4	1 x PNP	0523057000000000	0523052000000000	0523058000000000	0523053000000000
0863612000000000	0 ... 250	500	G1/4	1 x PNP	0523057000000000	0523052000000000	0523058000000000	0523053000000000
0863622000000000	0 ... 250	500	G1/4	2 x PNP	0523057000000000	0523052000000000	0523058000000000	0523053000000000
0863712000000000	0 ... 400	750	G1/4	1 x PNP	0523057000000000	0523052000000000	0523058000000000	0523053000000000

## Accessories



# ELECTRONIC PRESSURE SWITCH

40D Pneumatic -1 ... 25 bar

- Space saving design
- Easy programming of set points
- Design with and without display
- Special functions selectable
- Analogue (1 ... 5V) and digital outputs, as NO/NC programmable
- Revolving display
- Not for outdoor application

## Technical Data

### Medium:

For non aggressive gases and dry, non lubricated compressed air

### Operation:

Pressure sensors are converting a fluidic signal into digital output and a proportional analogue voltage output signal

### Repeatability:

± 0,2 % of measuring range

### Vibration proof:

10 ... 55 Hz, 1,5 mm, xyz, 2 h

### Ambient temperature:

0°C ... +50°C

Air supply must be dry enough to avoid ice formation at temperatures below +2°C

## Materials

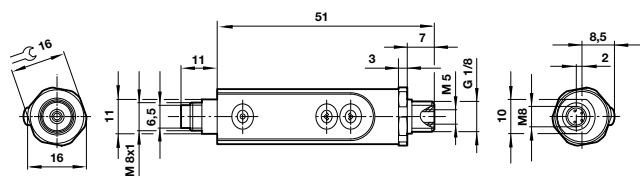
Housing: Plastic ABS - PC

Fluid ports: Nickel plated brass

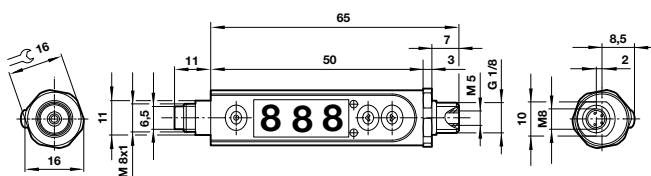


## Dimensions

Without display



With display



## Electrical connection M8 x 1

PIN-No.	Signal	Cable colour
1	+UB	Brown
2	PNP 2/ analogue 1 ... 5V	White
3	0 V	Blue
4	PNP 1	Black



## Models

Model	Port size	Pressure range (bar)	Display	Output signal	Connector M8 x 1			
					Straight x 1,5m long	Straight x 5m Long	90° x 1,5m Long	90° x 5 m Long
0862440000000000	G1/8 or M5	-1 ... 0	10	1 x PNP/analogue 1 ... 5 V	0523449000000000	0523447000000000	0523446000000000	0523448000000000
0862441000000000	G1/8 or M5	-1 ... 0	10	2 x PNP	0523449000000000	0523447000000000	0523446000000000	0523448000000000
0862442000000000	G1/8 or M5	0 ... 10	750	2 x PNP	0523449000000000	0523447000000000	0523446000000000	0523448000000000



# ELECTRONIC PRESSURE SWITCH

51D Pneumatic -1 ... 10 bar

- System pressure (unit bar, psi, Mpa, KPa, kgf/cm<sup>2</sup>, mmHg, InHg or mmH<sub>2</sub>O) selectable
- High accuracy and resolution
- Switching status indicated by LED

## Technical Data

### Medium:

For filtered, lubricated or non lubricated compressed air, neutral and incombustible gases

### Ambient temperature:

0°C ... +50°C

Air supply must be dry enough to avoid ice formation at temperatures below +2°C

### Display:

3 1/2 digit LED

### Repeatability (switch output):

≤ ±0,2% of full scale (FS) ±1 digit  
- without temperature sensitivity

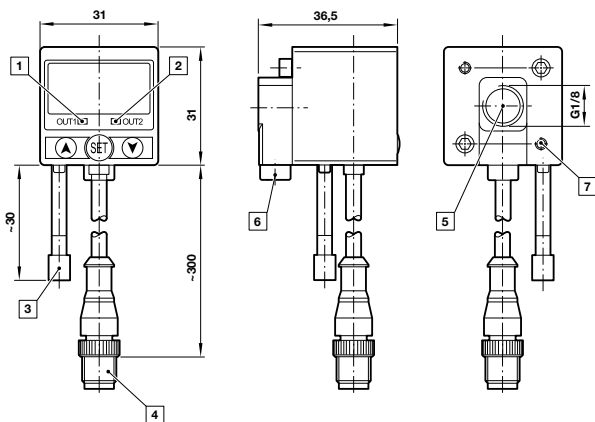
## Materials

Body:  
PC

# EXPRESS



## Dimensions



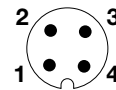
- 1 Switch OUT 1, green LED
- 2 Switch OUT 2, red LED
- 3 Dustproof protector
- 4 Connector M12 x 1
- 5 Inlet port
- 6 Alternative inlet port G1/8 plugged
- 7 Thread for mounting screw

## Electrical parameters





Electrical connection:	M12 x 1
Power supply:	12 ... 24 V d.c.
	24 V d.c. (PNP) maximum
	30 V d.c. (NPN) maximum

## Electrical connection M12 x 1

PIN-No.	Signal	Cable colour
1	+UB	Brown
2	Out 2	White
3	-	Blue
4	Out 1	Black



## Models

Model	Port size	Switching pressure range (bar)	Over pressure (bar)	Output signal	Mounting bracket (wall mounting)	Mounting bracket (bottom mounting)	Panel mounting kit
	G 1/8	-1 ... 10	15	2 x PNP			
0860810000000000	G 1/8	-1 ... 10	15	2 x PNP	0860000000000000	0860001000000000	0860005000000000
0860815000000000	G 1/8	-1 ... 10	15	2 x NPN	0860000000000000	0860001000000000	0860005000000000
0860820000000000	G 1/8	-1 ... 1	3	2 x PNP	0860000000000000	0860001000000000	0860005000000000
0860825000000000	G 1/8	-1 ... 1	3	2 x NPN	0860000000000000	0860001000000000	0860005000000000

## Accessories

# PRESSURE SENSORS

18S Pneumatic -1 ... 25 bar

- Temperature compensated
- Vacuum and overpressure
- Robust design for pneumatic and industrial applications
- Not for outdoor application

## Technical Data

### Medium:

Compressed air, filtered, lubricated or non-lubricated

### Mounting position:

Optional

### Ambient temperature:

-10°C ... +85°C

Air supply must be dry enough to avoid ice formation at temperatures below +2°C

## Materials

Housing: Aluminium anodized

Sensor: VMQ piezo-resistive (with passive side to fluid)

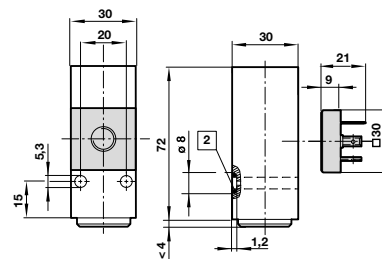
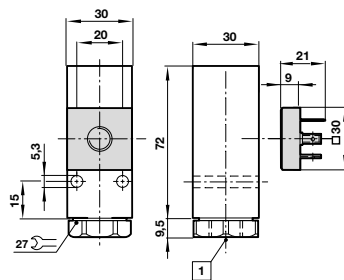
O-ring: NBR (flange version only)



## Dimensions

G1/4

Flange



- 1 Fluid port
- 2 O-ring 5 x 1,5

## Electrical connection

DIN 43650	
PIN-No.	Wiring
1	+UB
2	Signal 4 ... 20 mA

## Models

Model	Port size	Measuring range (Relative pressure) (bar)	Value max. (Over pressure) (bar)	Connector DIN EN 175301-803
0862081000000000	G1/4	-1 ... 1	10	0570110000000000
0862085000000000	Flange	-1 ... 1	10	0570110000000000
0862181000000000	G1/4	0 ... 10	30	0570110000000000
0862185000000000	Flange	0 ... 10	30	0570110000000000
0862381000000000	G1/4	0 ... 25	40	0570110000000000
0862385000000000	Flange	0 ... 25	40	0570110000000000

## Accessories



## Options

- M12 connections